

## SINGLE BEAM SCREEDS

### Applications:

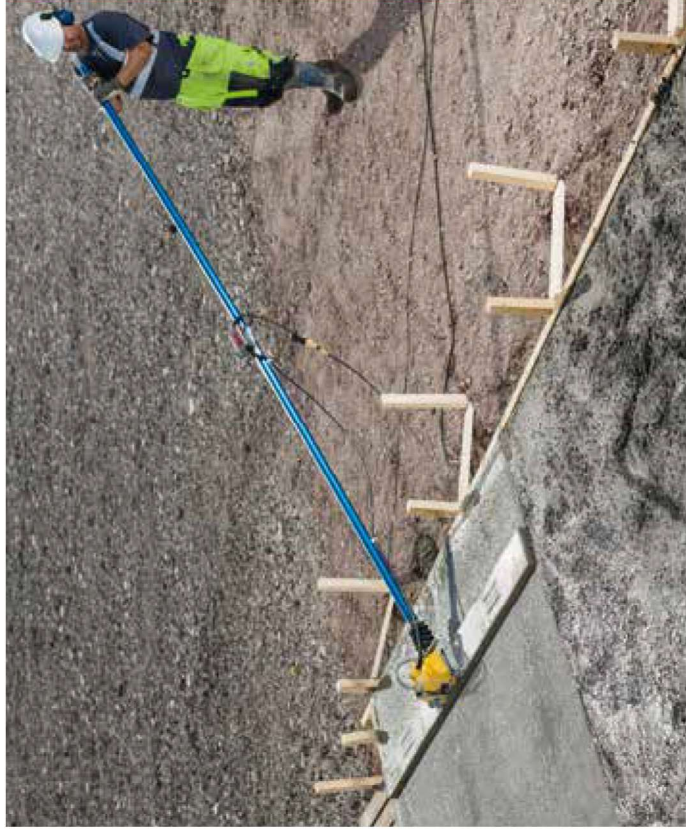
- Concrete vibration & leveling
- Low to high slump concrete
- Floors, slabs

### Advantages:

- Main parts made of aluminium
  - Rigid screed rail
  - Easy to clean
- ### Accessories:
- Profile for BV30 (1.8 to 4.2 m)
  - Extension handle for BV20

### Features:

- BV20 available with different drive units (manual, electric, petrol)
- BV30 available in gasoline
- High centrifugal force
- Vibration reducing handles



CONCRETE  
EQUIPMENT

## BV30



Screed blade	1,8 m	2,4 m	3,0 m	3,6 m	4,2 m
Weight	Kg	6,5	8	9,6	11,2
Part number	D604 0329 58 D604 0329 59 D604 0329 18 D604 0329 60 D604 0329 61				
Drive unit	BV30				
Weight, drive unit	Kg	13,5			
Vibrating unit <sup>1)</sup>	4-stroke Honda GX35				
Power	kW (hp)	1,2 (1,6) at 7000 rpm			
Vibration frequency	RPM	2000 to 7400			
Centrifugal force	N	max 3460			
Vibration value	m/s <sup>2</sup>	3,25			
Noise level	dB(A)	108			
Part number without blade	4812 0510 05				

<sup>1)</sup>The driving unit is delivered without screed blades which needs to be ordered separately

Single beams	BV20E	BV20G	BV20H	BV20H ext. tube
Working width	m	2,0	2,0	-
Operating weight	kg	19,8	16,6	7,4
Length handle	m	1,8+1,3	1,8+1,8	1,8+1,8
Energy		Electric	Petrol	Manual
Motor		230V-1-50/60 Hz	4-stroke Honda GX25	-
Power	kW (hp)	0,27	0,7 (1,0) at 7000 rpm	-
Vibration frequency	RPM	2000 to 10000	up to 7000	-
Centrifugal force	N	2000	max 1100	-
Vibration value	m/s <sup>2</sup>	-	3,2	-
Noise level	dB(A)	-	91	-
Part number	4812 0511 49	4812 0511 51	4812 0511 54	4700 0022 59